

### FEATURES

- 4.5V to 18V input voltage
- Output adjustable from 0.6V to 15V
- Output current up to 3A
- Integrated 85mΩ/45mΩ power MOSFET switches
- Shutdown current 3μA typical
- Efficiency up to 95%
- Fixed frequency 500KHz
- Internal soft start
- Over current protection and Hiccup
- Over temperature protection
- RoHS Compliant and 100% Lead (Pb) Free

### APPLICATIONS

- Distributed power systems
- Networking systems
- FPGA, DSP, ASIC power supplies
- Notebook computers
- Green electronics or appliance

### ORDERING INFORMATION

PART	PACKAGE	RoHS	Ship, Quantity
TD8113GM6	TSOT23-6L	Yes	Tape and Reel

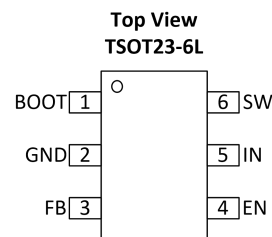
### DESCRIPTION

The TD8113GM6 is a high-frequency, synchronous, rectified, step-down, switch-mode converter with internal power MOSFETs. It offers a very compact solution to achieve a 3A continuous output current over a wide input supply range, with excellent load and line regulation. The TD8113GM6 has synchronous-mode operation for higher efficiency over the output current-load range. Current-mode operation provides fast transient response and eases loop stabilization.

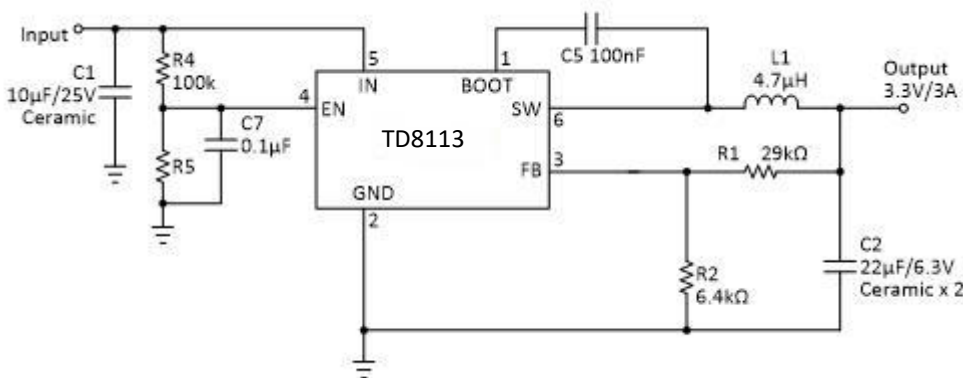
Protection features include over-current protection and thermal shutdown.

The TD8113GM6 requires a minimal number of readily available, standard external components and is available in a space-saving TSOT23-6L package.

### Pins Configuration



### Typical Application Circuit



Note: R5 and C7 are optional.

Details please see the DVT report.